

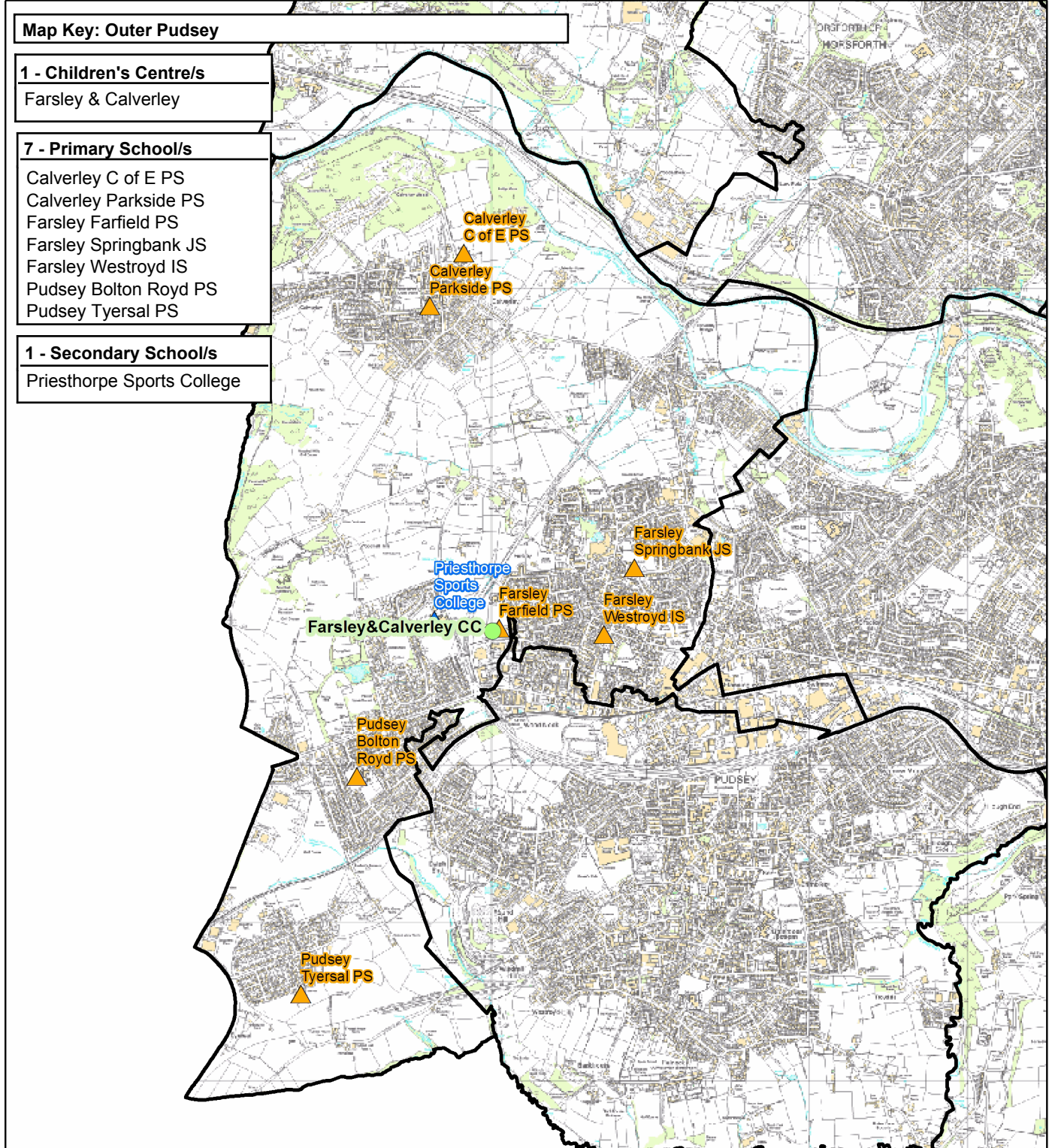
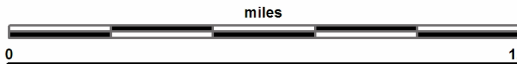
Outer Pudsey

This report was produced by the Children's Performance Service on 01/06/2012. The information in these overviews are based on the cluster data profile version 5.12.

For more information telephone 0113 39 50701 or email educ.pmi@leeds.gov.uk or visit:

www.leedsinitiative.org/ClusterDataProfile.aspx

The map to the right gives the position of the cluster in Leeds. The map below shows the location of the Children's Centres, Primary and Secondary Schools in the cluster.



Cluster Overviews key**Data Period:**

The codes in the key to the right are for the time periods that the data in these reports cover. They will appear next to all data sets.

Academic Year
Calendar Year
Financial Year
Snapshot
Other

DP:A
DP:C
DP:F
DP:S
DP:O

Cluster Overview

Data Source: January School Census					DP: S
Primary Schools	DFE	Total Number on roll			
		2010	2011	2012	
Calverley C of E Primary School	3046	278	281	284	
Calverley Parkside Primary School	2301	262	253	252	
Farsley Farfield Primary School	2505	388	384	408	
Farsley Springbank Junior School	2338	218	202	207	
Farsley Westroyd Infant School	2302	257	254	255	
Pudsey Bolton Royd Primary School	2331	465	479	462	
Pudsey Tyersal Primary School	2326	226	225	238	
Total		2094	2078	2106	

Data Source: January School Census					DP: S
Secondary Schools	DFE	Total Number on roll			
		2010	2011	2012	
Priesthorpe School	4110	1159	1159	1099	
Total		1159	1159	1099	

Data Source: Children's Services - Feb 2012		DP: S
Children's Centre reach area registration for families of children aged 0-5	% Registered	
Cluster	57.39	
Wedge	53.88	
Leeds all	60.23	

Data Source: Children's Services	
Children's Centre	Ofsted ID

Data Source: The office of National Statistics population mid-year estimates									DP: S
Population Estimates	0-15			Working Age			60/65+		
	2008	2009	2010	2008	2009	2010	2008	2009	2010
Cluster	3552	3688	3752	13453	13696	13768	3904	3977	4005
Wedge	44108	44366	44774	207876	208717	211509	47163	47875	48413
Leeds all	132741	133396	134493	516578	522769	531036	129937	131536	133240

Data Source: NHS Leeds													DP: S
Under Fives	September 2010						September 2011						
	0-1	1-2	2-3	3-4	4-5	Total	0-1	1-2	2-3	3-4	4-5	Total	
Cluster	262	272	244	237	220	1235	293	254	262	237	233	1279	
Wedge	3318	3278	3014	3023	2870	15503	3376	3315	3236	3035	3102	16064	
Leeds all	10202	9848	9478	9195	9113	47836	9996	10173	9787	9438	9319	48713	

Data Source: January School Census												DP: S
Percentage of pupils who are:	Black and Minority Ethnic			English as an Additional Language			Free School Meal Eligible			Special Education Needs		
	2010	2011	2012	2010	2011	2012	2010	2011	2012	2010	2011	2012
Primary												
Cluster school	31.9	32.8	34.9	21.3	20.7	20.2	10.2	11.8	11.2	12.4	13.2	12.0
Cluster residence	23.9	24.7	26.9	15.8	15.5	15.1	9.2	11.1	9.4	12.0	13.9	12.0
Wedge school	19.3	20.7	22.2	13.3	14.0	14.3	18.7	19.7	19.4	15.1	15.3	15.6
Total primary	23.6	24.8	26.4	15.8	16.5	17.1	21.5	22.2	22.0	17.8	17.8	17.4
Secondary												
Cluster school	32.1	36.2	38.1	26.4	28.3	29.8	14.5	15.6	16.5	10.7	14.8	18.5
Cluster residence	19.6	21.1	21.6	13.9	14.6	14.7	6.9	8.7	9.5	14.2	14.3	13.4
Wedge school	15.7	16.1	16.7	9.6	9.8	10.2	16.0	16.3	16.5	19.2	17.8	14.6
Total secondary	18.6	19.4	20.4	10.4	10.0	11.1	19.0	19.4	19.5	21.4	20.4	19.0
Leeds all	21.4	22.5	23.9	13.4	13.7	14.6	20.6	21.1	21.1	20.0	19.6	18.7

Data Source: HM Revenue and Customs - taken on 31st August 2007-2009										DP: S
Child Poverty	Number of children (under 16) in families in receipt of CTC or IS/JSA			Number of children (all ages) in families in receipt of CTC or IS/JSA			Number of children in poverty, by age of youngest child, 2009			
	2007	2008	2009	2007	2008	2009	0-4	5-10	11-15	16-19
Cluster	340	340	405	395	395	460	215	150	75	20
Wedge	8010	7990	8415	8935	8950	9465	4915	2700	1460	390
Leeds all	30235	29700	31030	33690	33300	34965	18720	9640	5115	1490

Data Source: Children's Services - Summer Term 2011					DP: S	
Nursery Education Grant Claims	Number of eligible children	Number of:			Resident Claims	Non Resident Claims
		Claims by childcare setting				
Cluster		378		370	232	138
Leeds all		14500		13851	9704	4148

Data Source: January School Census and 2010 Index of Multiple Deprivation										DP: S
IMD % of pupils resident in most deprived areas	3% most deprived			10% most deprived			20% most deprived			
	10	11	12	10	11	12	10	11	12	
Primary										
Cluster school	8.6	7.0	6.2	17.1	15.7	15.1	19.0	19.0	18.3	
Cluster residence	0.0	0.0	0.0	0.0	0.0	0.0	0.0	0.0	0.0	
Wedge school	1.5	2.8	2.5	15.6	15.0	15.1	26.8	27.6	27.8	
Total primary	8.2	8.4	8.3	28.1	27.1	27.3	36.6	37.6	38.0	
Secondary										
Cluster school	10.5	8.2	7.2	26.0	23.4	22.9	29.8	29.2	29.0	
Cluster residence	0.0	0.0	0.0	0.0	0.0	0.0	0.0	0.0	0.0	
Wedge school	2.6	3.1	2.9	15.0	14.2	14.0	24.6	25.0	24.7	
Total secondary	7.0	7.5	7.6	24.0	23.5	23.8	32.3	33.5	33.6	
Leeds all	7.7	8.0	8.0	26.4	25.7	25.9	34.8	35.9	36.2	

Data Source: January School Census and CACI ACORN											DP: S
KEY: Wealthier Achievers(WA), Urban Prosperity (UP), Comfortably Off (CO), Moderate Means (MM), Hard Pressed (HP)											
Percentage of pupils in each ACORN category	2011					2012					
	WA	UP	CO	MM	HP	WA	UP	CO	MM	HP	
Primary											
Cluster school	16.4	3.1	46.8	19.3	13.2	16.8	3.2	46.6	18.2	13.8	
Cluster residence	19.9	2.7	58.8	9.5	8.5	19.5	3.2	58.6	9.1	9.0	
Wedge school	14.6	8.0	31.3	13.0	32.3	14.2	8.2	31.5	13.0	32.2	
Total primary	15.4	5.9	27.8	15.8	34.3	15.0	6.0	27.7	15.9	34.6	
Secondary											
Cluster school	11.9	1.5	40.7	25.5	19.4	11.8	1.8	40.9	25.8	18.2	
Cluster residence	21.4	0.9	57.5	10.3	8.9	21.5	1.3	56.8	10.9	8.6	
Wedge school	18.4	7.0	32.6	12.6	28.8	18.4	7.1	32.8	12.7	28.4	
Total secondary	17.1	5.2	29.7	14.7	32.5	16.9	5.3	29.8	14.7	32.6	
Leeds all	16.1	5.6	28.5	15.4	33.6	15.8	5.7	28.5	15.4	33.8	

Data Source: DWP information Directorate													DP: F
KEY: Job Seekers Allowance (JSA), Incapacity Benefit (IB), Lone Parent Benefit (LPB), Total Out of Work (TOW)													
Unemployment Percentage of working age people in receipt of:	2009				2010				2011				
	JSA	IB	LPB	TOW	JSA	IB	LPB	TOW	JSA	IB	LPB	TOW	
Cluster	2.8	4.2	0.7	7.9	2.5	4.0	0.7	7.5	2.5	3.9	0.6	7.4	
Wedge	3.5	4.7	1.2	9.8	3.4	4.7	1.2	9.7	3.4	4.7	1.0	9.5	
Leeds all	4.4	5.9	1.8	12.6	4.3	5.8	1.7	12.3	4.2	5.8	1.5	12.1	

Data Source: AXCIOM Lifestyle Survey 2009-2011													DP: S					
	Property type by %									Length of residence by %								
	Owned			Rented - Council			Rented - Private			Less than 1 year			2-5 years			More than 5 years		
	09	10	11	09	10	11	09	10	11	09	10	11	09	10	11	09	10	11
Cluster	83.9	83.1	11.1	8.8	9.0	93.6	7.3	7.9	0.1	5.5	5.4	4.6	20.7	21.2	21.8	73.9	73.4	73.6
Wedge	62.9	62.8	34.8	21.7	21.6	71.9	15.4	15.6	0.0	9.4	10.7	6.1	20.6	20.6	18.3	70.0	68.7	75.5
Leeds all	61.5	61.6	39.0	24.0	23.9	61.2	14.5	14.6	0.0	7.9	8.1	5.1	20.3	20.0	18.5	71.9	71.9	76.4
Income by %	<10k			10-20k			20-30k			30-40k			40-50k			50k+		
	09	10	11	09	10	11	09	10	11	09	10	11	09	10	11	09	10	11
Cluster	14	12	12	18	18	17	12	13	18	21	17	18	21	13	18	15	27	16
Wedge	20	17	18	21	20	22	16	16	15	15	17	18	14	11	13	15	19	14
Leeds all	20	18	18	21	20	23	16	15	16	15	18	17	14	13	13	14	16	14
Struggling with payments by %	Food									Bills			Mortgage					
				09	10	11				09	10	11						
Cluster				14.0	9.9	6.3				15.1	10.1	5.0				3.2	1.6	2.3
Wedge				15.4	11.1	6.2				15.2	12.6	7.5				1.7	2.0	1.6
Leeds all				15.9	10.8	6.4				16.3	13.0	8.3				2.2	2.2	1.7

Being Healthy

Data Source: NHS Leeds										DP: Various - Listed with each report								
Birth Data DP: C	3 year rolling average of births below 2.5kg % low birth weight babies						Number and rate of conceptions per 1000 15-17 year olds											
	2006-08		2007-09		2008-10		Number				Rate							
							June to May				2008-09 2009-10							
Cluster	3.8		6.3		6.1		Cluster				16		10		23		15	
Wedge	7.1		7.1		6.8		Wedge				380		355		41		40	
Leeds all	7.8		7.8		7.6		Leeds all				1220		1145		45		43	
DP: C	% of women receiving a health and social care needs assessment at 12 weeks as a percentage of live births in the same year						DP: F	% Initiating breastfeeding April to March				% breastfeeding at 6 weeks April to March						
	2009		2010		2011			2009-10		2010-11		2009-10		2010-11				
Cluster	92.5		90.0		89.0		77.2		74.7		49.6		46.7					
Wedge	83.7		85.7		85.3		69.6		68.0		42.2		40.1					
Leeds all	81.6		82.9		84.0		67.6		65.1		40.4		39.3					
DP: C	Number of emergency admissions by age group 2007-11						Number of emergency admissions to hospital for injury, poisoning and certain other consequences of external causes by age group											
	0-4		5-10		11-18		0-4		5-10		11-18							
Cluster	715		200		335		74		69		96							
Wedge	9185		2518		6030		1108		809		2250							
Leeds all	29793		8247		18194		3419		2522		6711							
Immunisation Data DP: F	% of 2 year olds receiving vaccinations in quarter 3 for:						% of 5 year olds receiving vaccinations in quarter 3 for:											
	Diphtheria			MMR			Diphtheria			MMR								
	09-10	10-11	11-12	09-10	10-11	11-12	09-10	10-11	11-12	09-10	10-11	11-12						
Cluster	98	100	96	98	93	96	98	98	94	96	94	93						
Wedge	97	97	98	88	90	95	95	93	96	93	90	94						
Leeds all	96	96	97	86	88	94	95	94	96	91	91	95						

Data Source: National Child Measurement Programme												DP: A		
Obesity	Obesity in Reception						Obesity in Year 6							
	% Obese			% Obese or overweight			% Obese			% Obese or overweight				
	08-09	09-10	10-11	08-09	09-10	10-11	08-09	09-10	10-11	08-09	09-10	10-11		
Cluster	10.2	9.9	8.6	22.8	23.2	21.9	17.5	19.3	18.7	29.5	32.7	32.9		
Wedge	9.6	10.0	9.4	23.0	24.4	23.1	20.6	20.2	18.7	34.2	33.9	32.7		
Leeds all	9.4	10.2	9.7	21.7	23.7	23.4	20.3	20.7	20.0	34.3	35.1	34.3		
Obesity	Obesity in Reception 3 year average 2008-2011						Obesity in Year 6 3 year average 2008-2011							
	% Obese			% Obese or overweight			% Obese			% Obese or overweight				
Cluster	9.49			22.59			18.45			31.55				
Wedge	9.66			23.49			19.88			33.66				
Leeds all	9.77			22.96			20.32			34.56				

Stay Safe

Data Source: Children's Services					DP: Various - Listed with each report							
Number of LAC and Child protection plans	The number of children and young people looked after by the Local Authority - March based on home address before coming into care					based on placement address			The number of children with child protection plans - March		DP: S	
	DP: S	2011	2012	2012	2011	2012	2011	2012				
Cluster		8	8		13		12		SUPP			
Wedge		0	411		326		0		379			
Leeds all		1439	1454		1454		947		1019			
Number of Common Assessments (CAFs)					Social Care			Social Care Referrals		Requests for Service		
DP: C	2008	2009	2010	2011	DP:A	2009	2010	2011	DP:S	Feb 11 - Jan 12		
Cluster	9	10	16	15	Cluster	151	189	214		353		
Wedge	140	243	312	278	Wedge	3813	3622	3852		8460		
Leeds all	457	849	1115	892	Leeds all	14248	13784	14000		30539		
Number of Child and Adolescent Mental Health Services referrals												
DP: S	aged 11 and under				aged 12-18		total referrals					
September-October	2009-10		2010-11		2009-10		2010-11		2009-10		2010-11	
Cluster			39		26		54		25		93	51
Wedge			512		362		1054		588		1566	950
Leeds all			1767		1124		2976		1730		4743	2854

Make a positive Contribution

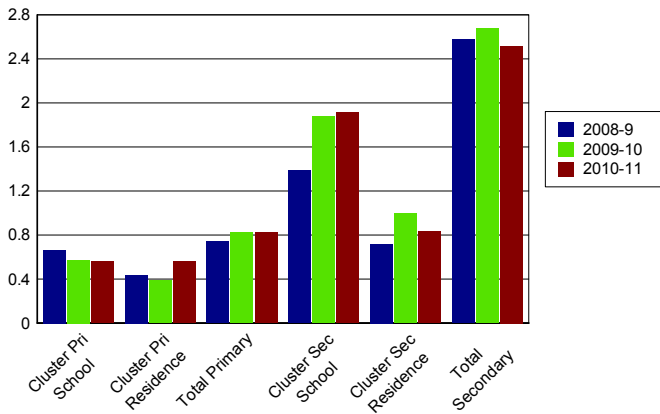
Data Source: West Yorkshire Police										DP: C
Property Crime Number of recorded crimes for:	Burglary dwelling		Burglary elsewhere		Criminal damage		Robbery		Vehicle crime	
	10	11	10	11	10	11	10	11	10	11
Cluster	270	259	184	183	217	143	13	19	168	208
Wedge	4156	4057	2127	2015	4299	3249	379	413	2945	2637
Leeds all	9508	8487	5681	5408	13599	10426	1297	1226	9168	7971
Personal Crime Number of recorded crimes for:					Drug Offences		Theft from person		Violent crime	
					10	11	10	11	10	11
Cluster						37	8	9	129	122
Wedge					187	934	290	525	2966	2712
Leeds all					1248	3192	2235	3034	11233	10896
Domestic Violence Incidents	Number of incidents recorded with a domestic qualifier or disposition code on the Storm WYP incident recording system - 2011									
Cluster	171									
Wedge	3695									
Leeds all	14525									

Data Source: Youth Offending Service										DP: A
Youth Offending	Number of Offenders					Number of Offences				
	07-08	08-09	09-10	10-11	07-08	08-09	09-10	10-11		
Cluster	24	17	13	15	30	27	22	29		
Wedge	627	474	334	355	1616	1031	732	785		
Leeds all	2741	2166	1522	1511	6331	4883	3134	3150		
April 2010 - March 2011 Number of offences by young offenders										
	Burglary	Breaches	Criminal Damage	Drugs Offences	Motoring and Vehicle	Other	Public Order	Theft and handling	Violence against the person	
Cluster	SUPP	SUPP	SUPP	SUPP	SUPP	SUPP	6	6	6	
Wedge	96	68	86	50	62	67	58	171	127	
Leeds all	291	270	328	204	218	358	282	612	587	

Data Source: School Census													DP: A
Attendance and persistent absence by percentage	Attendance			Authorised Absence			Unauthorised Absence			Persistent Absence 15%			
	08-09	09-10	10-11	08-09	09-10	10-11	08-09	09-10	10-11	08-09	09-10	10-11	
Primary													
Cluster school	94	95	95	5	5	5	0.7	0.6	0.6	6.6	3.2	4.3	
Cluster residence	95	95	95	5	5	4	0.4	0.4	0.6	4.0	3.3	4.0	
Total primary	94	94	95	5	5	4	0.7	0.8	0.8	5.9	5.5	4.3	
Secondary													
Cluster school	92	92	92	7	6	6	1.4	1.9	1.9	12.7	10.9	10.7	
Cluster residence	94	94	94	6	5	5	0.7	1.0	0.8	7.3	7.3	5.2	
Total secondary	92	92	92	6	6	5	2.6	2.7	2.5	13.0	13.1	11.2	

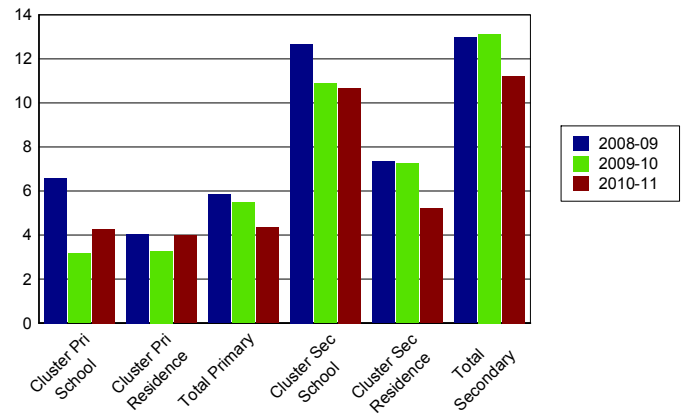
% Unauthorised Absence

2008-2011



% Persistent Absence

by 15% measure 2008-2011



Data Source: Children's Services													DP: A
Exclusions	Fixed Term Exclusions						Permanent Exclusions						
	Number			Rate per thousand			Number			Rate per thousand			
Primary	08-09	09-10	10-11	08-09	09-10	10-11	08-09	09-10	10-11	08-09	09-10	10-11	
Cluster school	21	11	21	10.1	5.3	10.1	0	0	0	0.0	0.0	0.0	
Cluster residence	15	14	15	8.6	8.1	8.5	0	0	0	0.0	0.0	0.0	
Total primary	467	371	455	7.7	6.0	7.3	2	2	2	0.0	0.0	0.0	
Secondary													
Cluster school	150	150	170	127.7	129.4	146.7	3	2	1	2.6	1.7	0.9	
Cluster residence	71	74	114	72.0	71.2	107.1	1	1	0	1.0	1.0	0.0	
Total secondary	4350	4286	3806	93.6	93.1	83.2	52	57	44	1.1	1.2	1.0	

Enjoy and Achieve

Data Source: Keyphas and DFE performance tables

DP: A

Foundation Stage Profile Data The percentage of pupils achieving a good level of development (78+ points overall and 6+ points in all PSE and CCL strands)

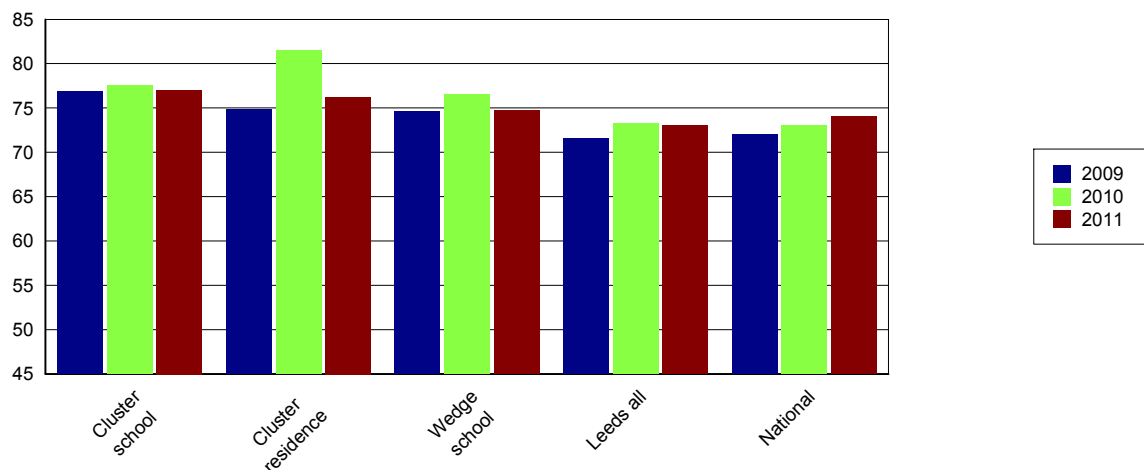
	2008	2009	2010	2011
Cluster school	51	57	59	62
Cluster residence	50	59	61	64
Leeds all	47	51	53	58

KS2 Data DP: A	English 4+			English 5+			Maths 4+			Maths 5+			English & Maths 4+		
	09	10	11	09	10	11	09	10	11	09	10	11	09	10	11
Cluster school	86	85	85	41	33	32	80	81	83	35	38	46	77	77	77
Cluster residence	86	87	84	35	37	32	80	83	83	32	42	49	75	81	76
Wedge school	83	82	83	32	34	30	80	82	80	33	33	35	75	77	75
Leeds all	79	79	81	28	31	32	77	79	78	33	31	32	72	73	73
National	80	80	82	29	33	29	79	79	80	35	34	35	72	73	74

KS2 Data - Expected progress	Made 2 levels of progress in English		Made 2 levels of progress in Maths	
	Number of pupils	Percentage	Number of pupils	Percentage
Cluster school	196	89.5	195	89.0
Wedge school	2174	88.1	2092	84.7
Leeds all	6334	88.6	6087	85.0
National		84.0		83.0

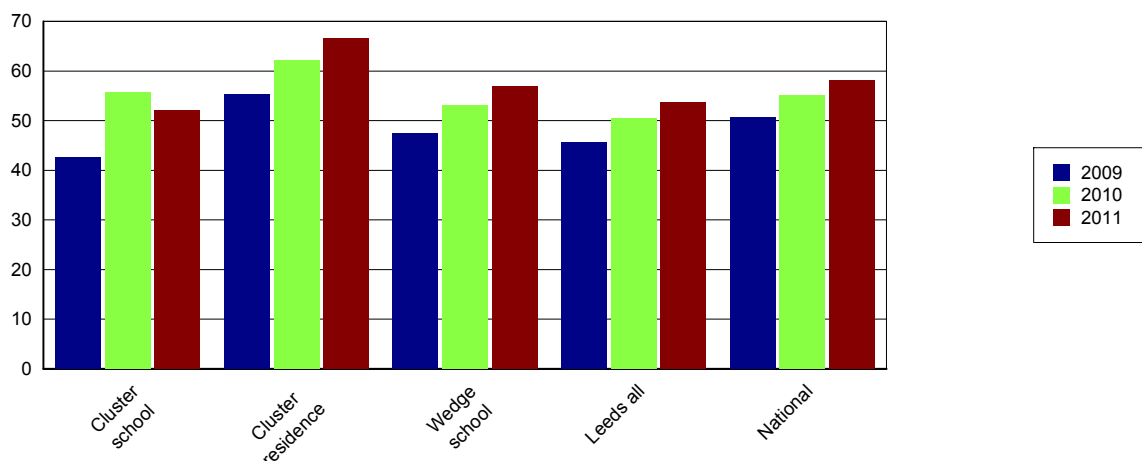
Percentage of English and Maths

Level 4+



Data Source: EPAS and DFE performance tables											DP: A		
The results are for GCSE & equivalent qualifications. The calculation of achieving no qualifications includes all qualifications													
KS4 Data	% of 5+ A*-C			% of 5+ A*-C inc Eng & Maths			% English Baccalaureate	% of 5+ A*-G			% achieving no qualifications		
	09	10	11	09	10	11		09	10	11	09	10	11
Cluster school	79	75	88	43	56	52	19	95	98	96		0	1
Cluster residence	81	82	93	55	62	67	22	96	96	99	1	1	0
Wedge school	68	75	81	47	53	57	19	92	94	96	1	1	1
Leeds all	67	76	82	46	51	54	13	91	94	94	2	2	1
National	70	76	81	51	55	58	15	94	95	95		1	1

Percentage 5 A*-C Including English and Maths



Achieve Economic Well Being

Key: Not in Employment, Education or Training (NEET), In Employment, Education or Training (EET), in Full time Education (FE)													
Data Source: November destination survey													DP: S
NEET/FE		Number of NEET			% NEET			Number of FE			% FE		
		2009	2010	2011	2009	2010	2011	2009	2010	2011	2009	2010	2011
Cluster school	Year 11	12	8	5	6	4	3	181	177	126	83	87	88
	Year 12	SUPP	SUPP	5	SUPP	SUPP	5	90	95	101	83	92	94
	Year 13	SUPP	SUPP	SUPP	SUPP	SUPP	SUPP	51	61	73	76	77	92
Cluster residence	Year 11	9	7	SUPP	5	4	SUPP	166	167	191	84	90	93
	Year 12	SUPP	SUPP	SUPP	SUPP	SUPP	SUPP	97	99	101	87	93	94
	Year 13	SUPP	SUPP	SUPP	SUPP	SUPP	SUPP	71	66	76	83	74	89
Leeds all	Year 11	646	393	357	8	5	5	6703	7194	6564	80	87	87
	Year 12	132	67	115	3	2	3	3436	3476	3550	90	93	93
	Year 13	121	135	120	5	4	4	2067	2350	2593	78	76	84

Data Source: Integrated Youth Support Service										DP: O	
16-18 NEET and EET Nov 2011 to Jan 2012	NEET		EET		Not Known		Other Activity				
	Number	%	Number	%	Number	%	Number	%			
Cluster	13	2.4	533	97.1	SUPP	SUPP	SUPP	SUPP			
Wedge	452	6.1	6860	93.0	104	1.4	21	0.3			
Leeds all	1538	7.0	20170	91.7	343	1.6	58	0.3			

Please Note: Leeds totals for 16-18 NEET will not match publicised totals as published totals include a proportion of those whose status has expired